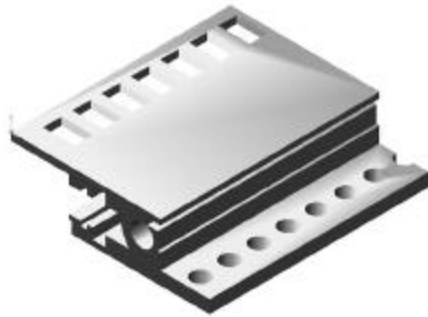


Extrusions - cPCI

Aluminum Extrusions

- Clear chromate finish; Aluminum 6066-T6
- Includes metric screw tapping at two ends
- IEEE 1101.10 & 1101.11 compliant
- Custom lengths are available other than table listings



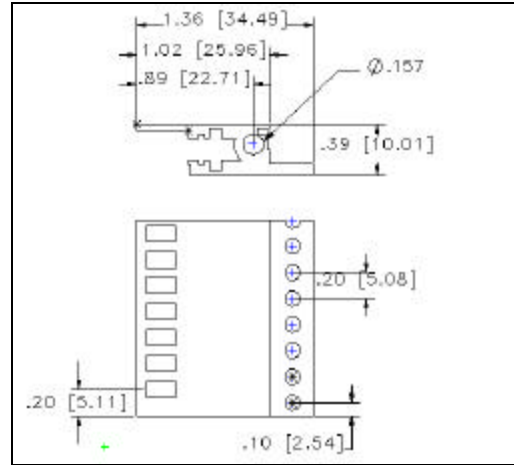
Front Extrusion - IEEE 1101.10 & IEEE 1101.11 Compliant

Nut Strip P/N 1404-0016-98

Part Number	HP	A
1441-0012-84	84	17.00" (431.8mm)
1441-0012-63	63	12.80" (325.1mm)
1441-0012-42	42	8.60" (218.4mm)
1441-0012-21	21	4.40" (218.4mm)

Available in any length on request

Screw #80884106: Pan head, cl. zinc, 8-32 x 5/8"



Subracks



Rear Extrusion - IEEE 1101.10 & IEEE 1101.11 Compliant

Nut Strip P/N 5700202B

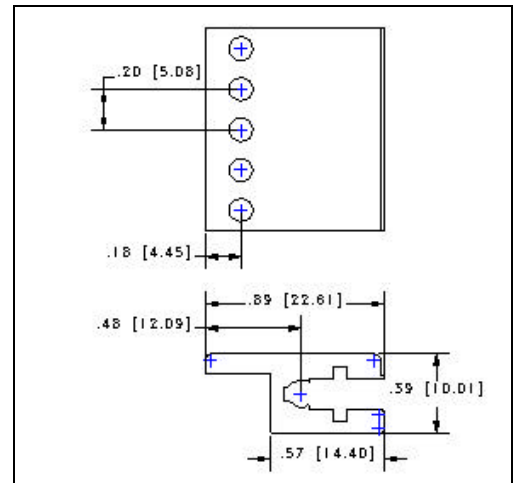
84HP or scalable to cage width

Insulator P/N 5250998-84

Part Number	HP	A
1440-0013-84	84	17.00" (431.8mm)
1440-0013-63	63	12.80" (325.1mm)
1440-0013-42	42	8.60" (218.4mm)
1440-0013-21	21	4.40" (218.4mm)

Available in any length on request

Screw #80884106: Pan head, cl. zinc, 8-32 x 5/8"



1U = 1.75"
1 HP = .200" (5.08mm)